



BIOCHEMICAL
SOCIETY

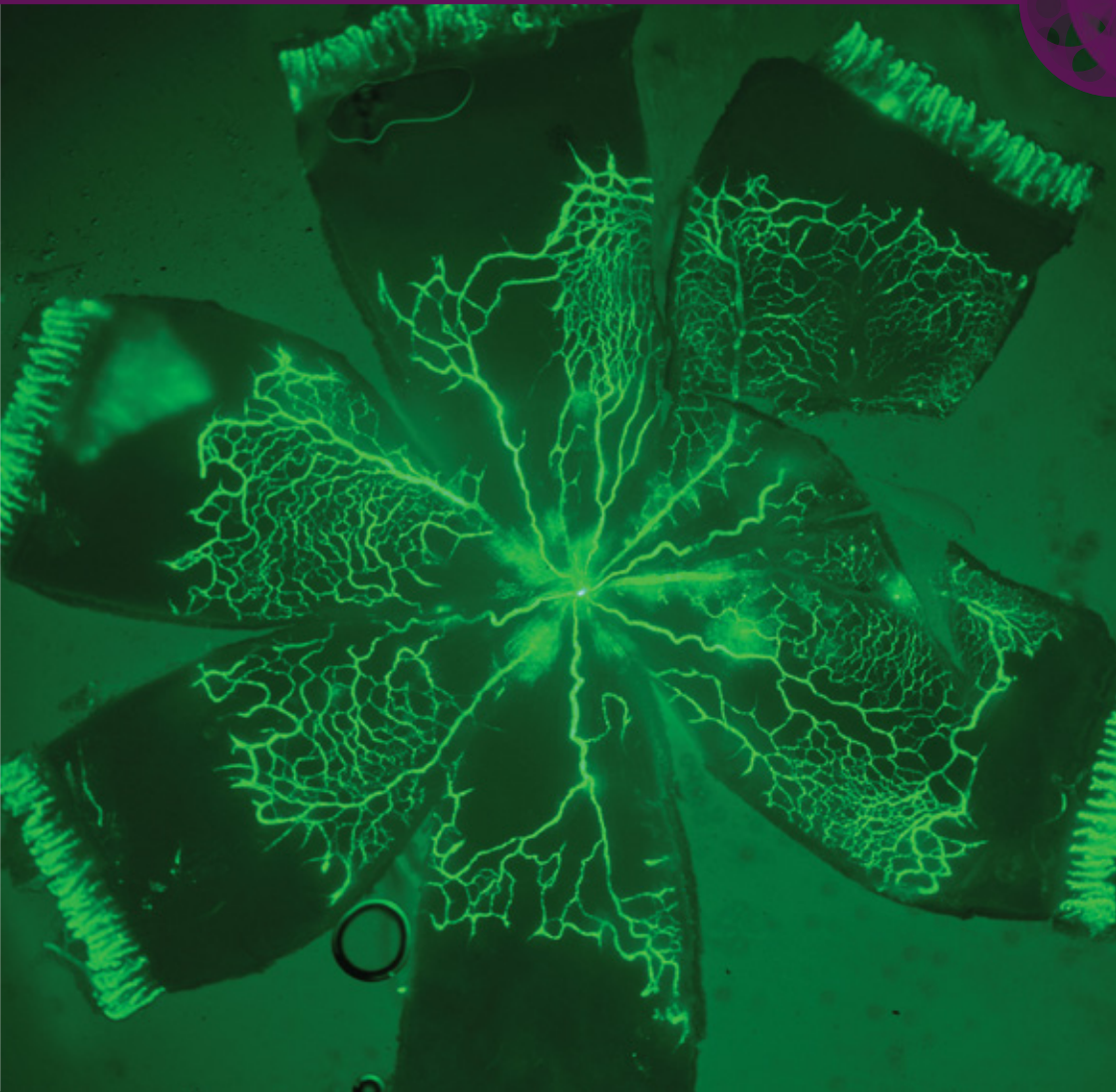


PORTLAND
PRESS

CLINICAL SCIENCE

LINKING BASIC SCIENCE TO
DISEASE MECHANISMS

portlandpress.com/clinsci



Translating molecular bioscience and experimental research into medical insights, papers published in *Clinical Science* cover a range of topics, including the cardiovascular system and vascular biology, genomic medicine, inflammation, nephrology, hepatology, and the respiratory system.

Editor-in-Chief

Rhian M. Touyz (University of Glasgow, UK)

Reviews Editor

Mark Cooper (Melbourne, Australia)

Associate Editors

Philip Calder (University of Southampton, UK)

Christian Delles (University of Glasgow, UK)

Satoru Eguchi (Lewis Katz School of Medicine at Temple University, USA)

Stephen Holgate (University of Southampton, UK)

Masatsugu Horiuchi (Ehime University, Japan)

Mansoor Husain (MaRS Centre, Canada)

Karin Jandeleit-Dahm (Monash University, Australia)

Jose Kreiger (University of São Paulo, Brazil)

Jonathan Lamb (Imperial College, UK)

Isabelle Leclercq (Universite catholique de Louvain, Belgium)

Hongliang Li (Wuhan University, China)


Michael Ryan (University of Mississippi Medical Center, USA)

Maria Luisa S. Sequeira-Lopez (University of Virginia, USA)


Ilja Striz (Prague IKEM, Czech Republic)

Ross Vlahos (RMIT University, Australia)


Articles

 **Much Ado about N...atrium: modelling tissue sodium as a highly sensitive marker of subclinical and localized oedema**

Giacomo Rossitto, Rhian M. Touyz, Mark C. Petrie and Christian Delles

 **Imbalance of gut microbiome and intestinal epithelial barrier dysfunction in patients with high blood pressure**

Seungbum Kim, Ruby Goel, Ashok Kumar, Yanfei Qi, Gil Lobaton, Koji Hosaka, Mohammed Mohammed, Eileen M. Handberg, Elaine M. Richards, Carl J. Pepine and Mohan K. Raizada

 **Mitochondrial ROS-induced lysosomal dysfunction impairs autophagic flux and contributes to M1 macrophage polarization in a diabetic condition**

Yujia Yuan, Younan Chen, Tianqing Peng, Lan Li, Wuzheng Zhu, Fei Liu, Shuyun Liu, Xingxing An, Ruixi Luo, Jingqiu Cheng, Jingping Liu and Yanrong Lu

 **The classification, genetic diagnosis and modelling of monogenic autoinflammatory disorders**

Fiona Moghaddas and Seth L. Masters

 **Recent developments in genetic/genomic medicine**

Rachel H. Horton and Anneke M. Lucassen



OPEN ACCESS
PUBLISHING IS AVAILABLE



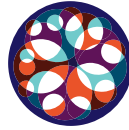
EXPERT
PEER REVIEW



TOTAL ARTICLE VIEWS
IN 2019
660K⁺



BEST PRACTICE
ADHERES TO COPE AND
ICMJE GUIDELINES



INDEPENDENT
ALL OF OUR
PROFITS SUPPORT
THE BIOCHEMICAL SOCIETY



INTERNATIONAL
EDITORIAL BOARD



FREE COLOUR FIGURES
ALSO NO SUBMISSION
OR PAGE CHARGES



IMPACT FACTOR
5.223^{*}



AVERAGE ACCEPTANCE
TO PUBLICATION
14 DAYS



INDEXED IN
GOOGLE SCHOLAR,
PUBMED AND
WEB OF SCIENCE



RESEARCHER NETWORK
PARTNERED WITH ORCID
AND PUBLONS



POLICY
WE ACTIVELY CONTRIBUTE TO
THE EVOLVING LANDSCAPE
OF ACADEMIC PUBLISHING

W portlandpress.com/clinsci
E editorial@portlandpress.com

SUBMIT
clinsci.msubmit.net

SIGN UP TO ALERTS
VIA OUR HOMEPAGE

As the Biochemical Society's publisher, we work in partnership with researchers, institutions, and funders to share knowledge and advance the molecular biosciences.

Publishing world-leading research and reviews across our portfolio of seven journals, we return all of our profits to the life science community in support of our Society's charitable activities. With more than six million worldwide article views in 2019, our journals cover the depth and breadth of the molecular biosciences, from observational work to interpreting mechanisms, from translating basic research into medical insights to foundational overviews of new and emerging topics.

W portlandpress.com  editorial@portlandpress.com  [@PPPublishing](https://twitter.com/PPPublishing)

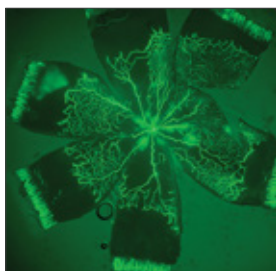


**BIOCHEMICAL
SOCIETY**

(Registered Charity No 253894)

Founded in 1911, the Biochemical Society exists to advance molecular bioscience, promoting its importance as an academic discipline, from grassroots level to government policy, and highlighting its role in positively effecting societal challenges. Offering an extensive programme of scientific meetings, training events and courses, educational resources and activities, policy and public engagement, the Society provides support for researchers and scientists, teachers, and members of the public.

W biochemistry.org  communications@biochemistry.org  [@BiochemSoc](https://twitter.com/BiochemSoc)



Cover Image

The cover features a flat-mounted rat retina from Qiu and Ma *et al.* on the possible pathogenic role of human C-reactive protein (hCRP) in diabetic retinopathy. They found that hCRP promotes ischemia-induced retinal neovascularization in a rat model of oxygen-induced retinopathy.

doi.org/10.1042/CS20200085